



# RISK ASSESSMENT MADE SIMPLE !!!

**Sarah Tullett**

**Health, Safety and Facilities Manager**

So, what is risk assessment ?



# Well, its .....

**“a suitable and sufficient assessment of :**

- a) the risks to the health and safety of his employees to which they are exposed while they are at work, and**
- b) the risks to the health and safety of persons not in his employment arising out of or in connection with the conduct by him of his undertaking .....**”

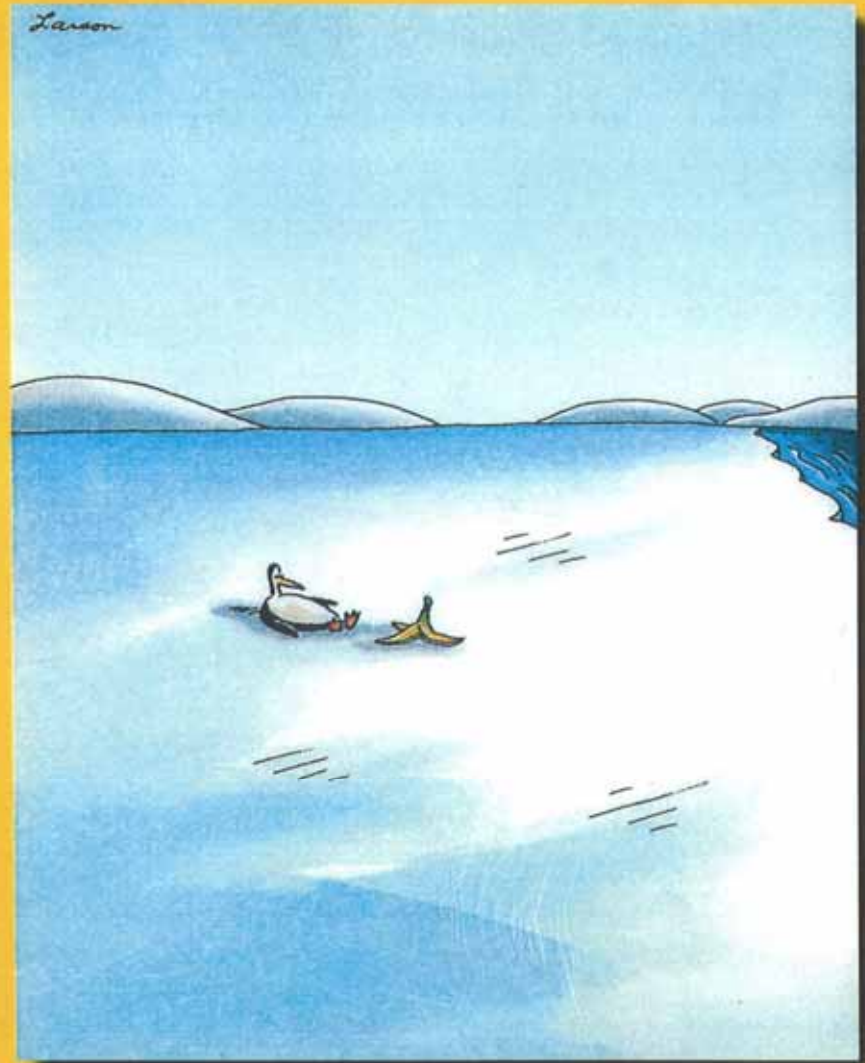
**Management Regulations 1999**

helpful ?

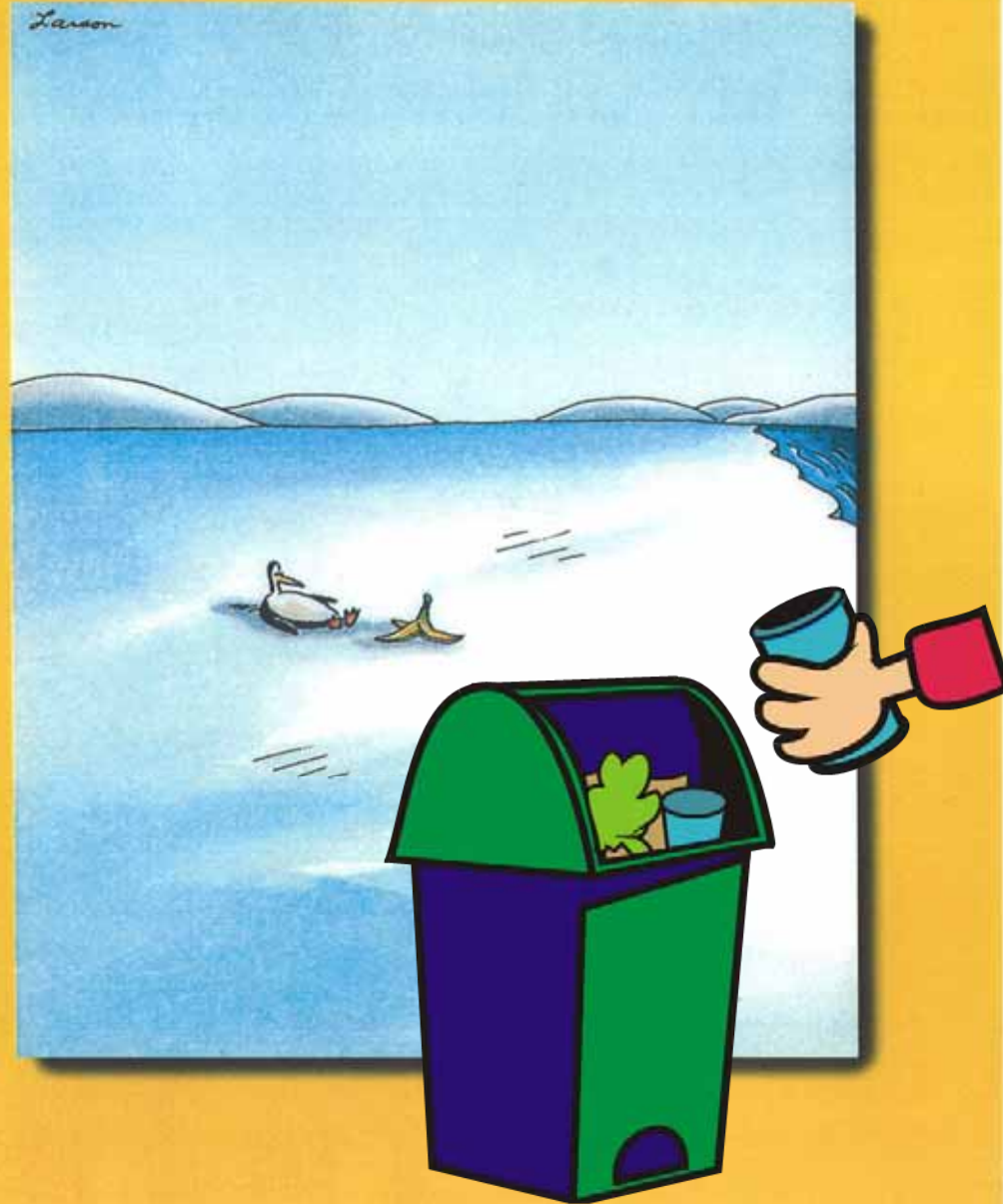
probably not !

so, in simpler terms  
risk assessment is :

Deciding  
what can  
go wrong



and  
deciding  
what to  
do about  
it



# and there is help available

## HSE's Five Steps to Risk Assessment

- Identify the hazards, ie dangers and who will be affected by them
- Evaluate and prioritise the associated risks
- Determine the necessary control measures
- Record the significant findings
- Review and revise the assessment

## HSE's Simplified Risk Assessments

# Hazard



# Risk

Likelihood x Severity



# Review and Revise



# Record



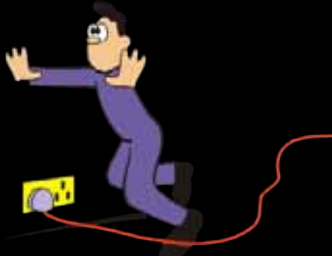
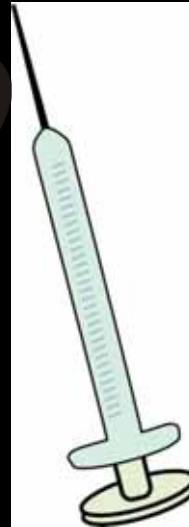
# Controls

# Jargon busting

**Hazard :** **Something that has the POTENTIAL to cause harm**

**Risk :** **Exposure to the hazard - likelihood and severity of harm occurring**

**Controls :** **The actions taken to eliminate or reduce the risks**



# Hazards



# Risk 1

<b>Likelihood</b>	<b>Severity</b>	<b>Rating/Priority</b>
Very likely	Death/major injury	High risk
Possible/likely	Treatment injury /lost time	Medium risk
Unlikely	Minor injury/near- miss	Low risk

# Risk 2

Risk				Scores	Rating	Time
Likelihood		Severity				
Very likely	3	Death/ major injury	3	9	High	Immediate
				6		
Likely/ possible	2	Treatment injury/ Lost time	2	4	Medium	3 months
				3		
Unlikely	1	Minor injury/ Near-miss	1	2	Low	12 months
				1		

# Risk 3

Risk				Scores	Rating	Time
Likelihood		Severity				
Very likely	3	Death/ major injury	4	12	Very high	Immediate
				8	High	1 week
Likely/ possible	2	Treatment injury/ Lost time	2	6	Medium/high	1 month
				4	Medium	3 months
				3	Medium/low	6 months
Unlikely	1	Minor injury/ Near-miss	1	2	Low	9 months
				1	Very low	12 months

# Controls

## Prevention Principles

- Avoid risks
- Prioritise unavoidable risks
- Combat at source
- Adapt work to individual
- Substitute for less hazardous
- Collective over individual measures
- Information, instruction, training





# Review and Revision

- **Review regularly**
- **Review after any changes**
  - **new equipment**
  - **new procedures**
  - **pregnancies**
- **Revise controls accordingly**

# Summary

## KEEP IT SIMPLE

- **10 minute walk-around**
- **Accident statistics**
- **Speak to staff – get them involved**
- **Use HSE information and tools**
- **Don't just do, file and forget – risk assessments are dynamic and on-going**

# Further Information

- [www.hse.gov.uk](http://www.hse.gov.uk)
- [www.hse.gov.uk/risk/casestudies](http://www.hse.gov.uk/risk/casestudies)
- [www.csg.org.uk](http://www.csg.org.uk)
- [www.iosh.co.uk](http://www.iosh.co.uk)
- [www.cieh.org.uk](http://www.cieh.org.uk)
- [www.rosipa.co.uk](http://www.rosipa.co.uk)
- **“Charity and Voluntary Workers – A Guide to Health and Safety at Work”**